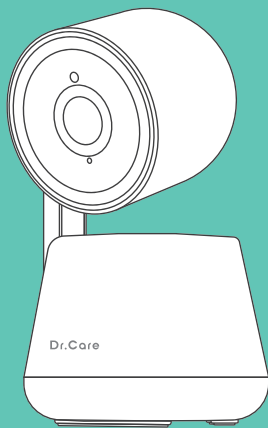


# Dr.Care

## App Setup & User Guide



Model: DC-SBM009  
7" SMART SPLIT SCREEN BABY MONITOR

# Using Your Baby Monitor via the App

## Getting Started

On the DC-SBM009 monitor, navigate to the menu and ensure that safety protection settings allow Wi-Fi access. Verify that Wi-Fi is not disabled. If you do not have the DC-SBM009 model, you can skip this step and simply connect the camera via the app.



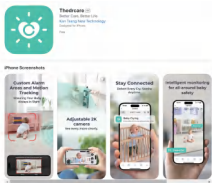
## Add a Camera

### Step 1: Connect Your Phone to a 2.4GHz Wi-Fi Network

- Ensure your phone is connected to a 2.4GHz Wi-Fi network, as the device does not support 5GHz networks.
- For best performance, make sure your phone has a strong wireless signal.

### Step 2: Download and Install the Dr. Care App

- Confirm your phone is compatible with the Dr. Care app (specify any unsupported systems here if applicable).
- Download the app by scanning the QR code or searching for "TheDrCare" in the Apple App Store or Google Play Store. If you encounter issues finding the app, visit [www.thedrcare.com](http://www.thedrcare.com) for live chat support or email [support@thedrcare.com](mailto:support@thedrcare.com).



- To stay updated on your child's activity, allow the Dr. Care app to send notifications. Additionally, enable access to Wi-Fi and wireless data networks.

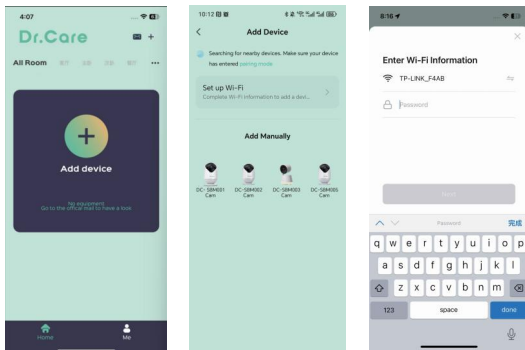
### Step 3: Sign In to Your Dr. Care Account

- If you don't have a Dr. Care account, tap "Register" to create one. Choose your country or region, then enter your email and password. Tap "Send" to receive a verification code. If the code doesn't arrive within 60 seconds, you can request a new one.
- If you already have an account, tap "Login" to connect with your baby monitor.

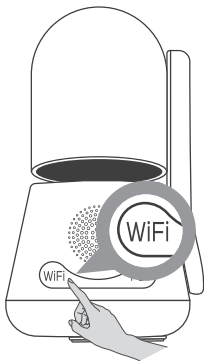
**By following these steps, you'll be able to monitor your baby directly from your device.**

## Step 4: Pair the Camera with Your Phone

1. Before adding the camera, ensure that your phone is connected to a 2.4GHz Wi-Fi network. Also, allow Dr. Care to find and connect to devices on your local network.
2. Tap "Add Device."



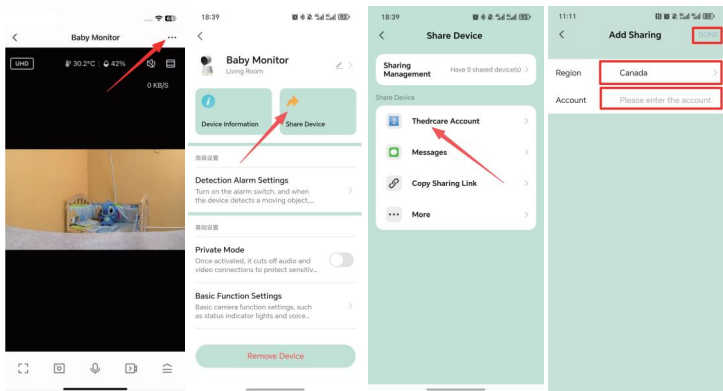
3. Allow Dr. Care to access your location and use Bluetooth.
4. Enter the Wi-Fi information to which your phone is connected.
5. Select the device you want to pair with your phone.



6. Press and hold the Reset button near the camera antenna for 5 seconds, When you hear the "DiDi" prompt tone, click "Next".
7. Your device will be found immediately, Tap "Add" and enter the password for the wi-Fi network to which your phone is connected. Otherwise, you will not be able to link your phone to the device.

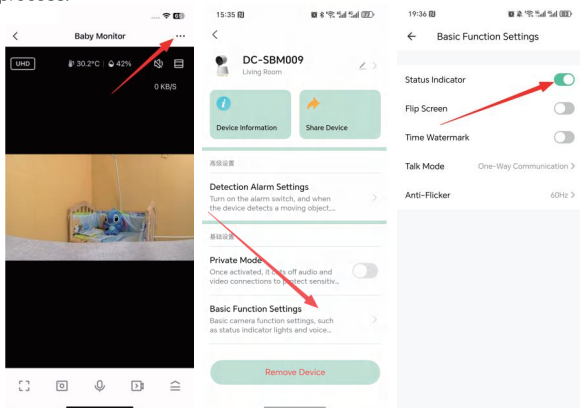
## Step 5: Share Camera Access with Other Users

Tap "Share Device", select "Share with TheDrcare Account", enter the invited account's country and username, then tap "DONE" to complete sharing.



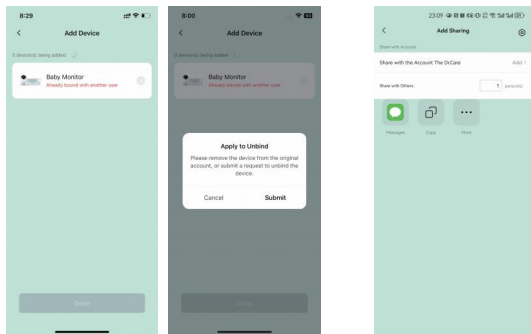
## Step 6: Turn Off the Status Indicator on the Camera

Go to "Basic Function Settings" in the app and disable "Status Indicator". Please note that the indicator will automatically turn back on when initiating a new pairing process.



## Step 7: Unbind the Device




If the camera displays "Already bound with another user," please click "Apply to Unbind" and fill in the order number from your purchase in the app. We will review the applicant's information to determine whether to proceed with the unbinding. If you purchased a second-hand device, please provide your order details.



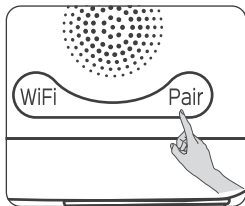
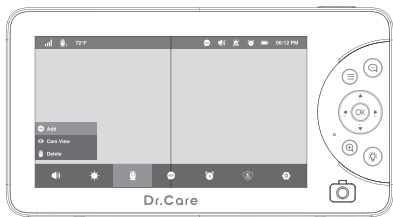
Note: To protect user privacy, each camera can only be bound to one user at a time. If you'd like to share the camera access with your family, please use the app's sharing feature.

## Connect the Camera to Your Monitor

If you do not have the DC-SBM009 model, you can skip this step and simply connect the camera via the app, which also supports features like cry detection, motion detection, and monitoring.

If you already have a DC-SBM009, follow these steps to pair it with your monitor: Press the  button and navigate through the menu using  → . Press the Pair button located near the camera's antenna and wait for the prompt tone.

The camera will automatically pair with the monitor.



# Dr.Care CUSTOMER CARE

## Default 12-Month Warranty

This appliance is covered by Dr.Care warranty for 12 months from the date of its original purchase.

## Extend Your Warranty

Extend your warranty by registering your new appliance on our website [www.thedrcare.com/warranty](http://www.thedrcare.com/warranty).

## The warranty will not apply in cases of:

- Accident, misuse, or repairs performed by unauthorized personnel.
- Any unit that has been tampered with or used for commercial purposes.
- Normal wear and tear of wearable parts.
- Use of force,damage caused by external influences.
- Damage caused by non-observance of the User Manual, e.g. connection to an unsuitable mains supply or noncompliance with the instructions.
- Partially or completely dismantled appliances.
- Defects caused by or resulting from damages from shipping or from repairs, service,or alteration to the product or any of its parts that have been performed by a repair person not authorized by Dr. Care.

We can only provide after-sales service for products that are sold by Dr.Care or Dr.Care authorized retailers and distributors. If you have purchased the appliance from a different place, please contact your seller for return and warranty issues.

## Contact Us

 [support@thedrcare.com](mailto:support@thedrcare.com)

 [www.thedrcare.com](http://www.thedrcare.com)